

LUMINAIRE PHOTOMETRIC TEST REPORT

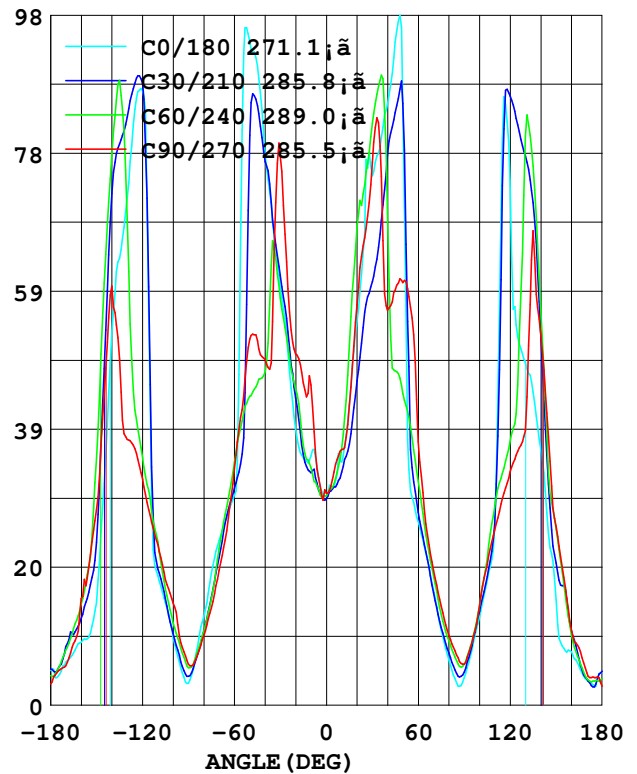
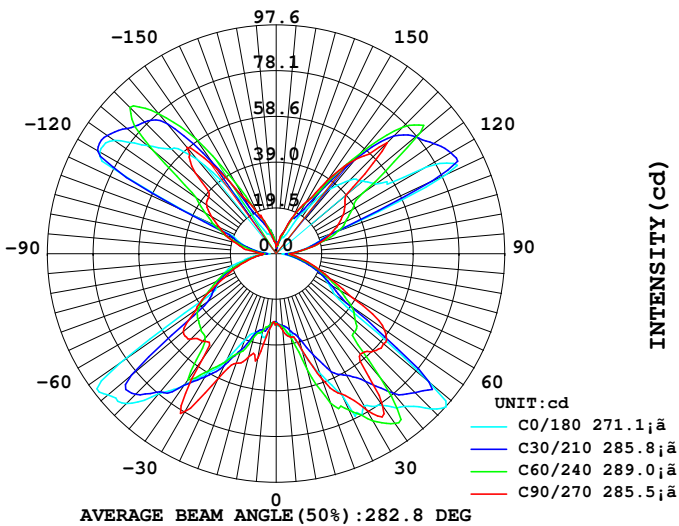
Report number: GO2018-262

MANUFACTURER: IDEAL LUX SRL	Address: Via Taglio Destro 32 - Mirano (VE)		
NAME: 110875 - KRONPLATZ TL1	TYPE: TABLE	WEIGHT:	
SPECIFICATION:	DIMENSION: 240x130x380	SERIAL No.:	

DATA OF LAMP		Imax (cd)	113.6	S/MH (C0/180)	2.19
MODEL	110875 - KRONPLATZ TL1	EFFICIENCY (%)	100.0	S/MH (C90/270)	2.06
NOMINAL POWER (W)	50	TOTAL FLUX (lm)	454.79	Voltage (V)	229.8
RATED VOLTAGE (V)	230	EFFICIENCY (lm/W)	9.5	Current (A)	0.217
NOMINAL FLUX (lm)	454.8	η up (%)	48.1	Power (W)	48.00
LAMPS QUANTITY	1	η down (%)	51.9	Power Factor (PF)	1.000
TEST VOLTAGE (V)	229.9	Effective Flux (lm)	434.9	EEL	1.331

LUMINOUS INTENSITY DISTRIBUTION

LUMINOUS INTENSITY DISTRIBUTION



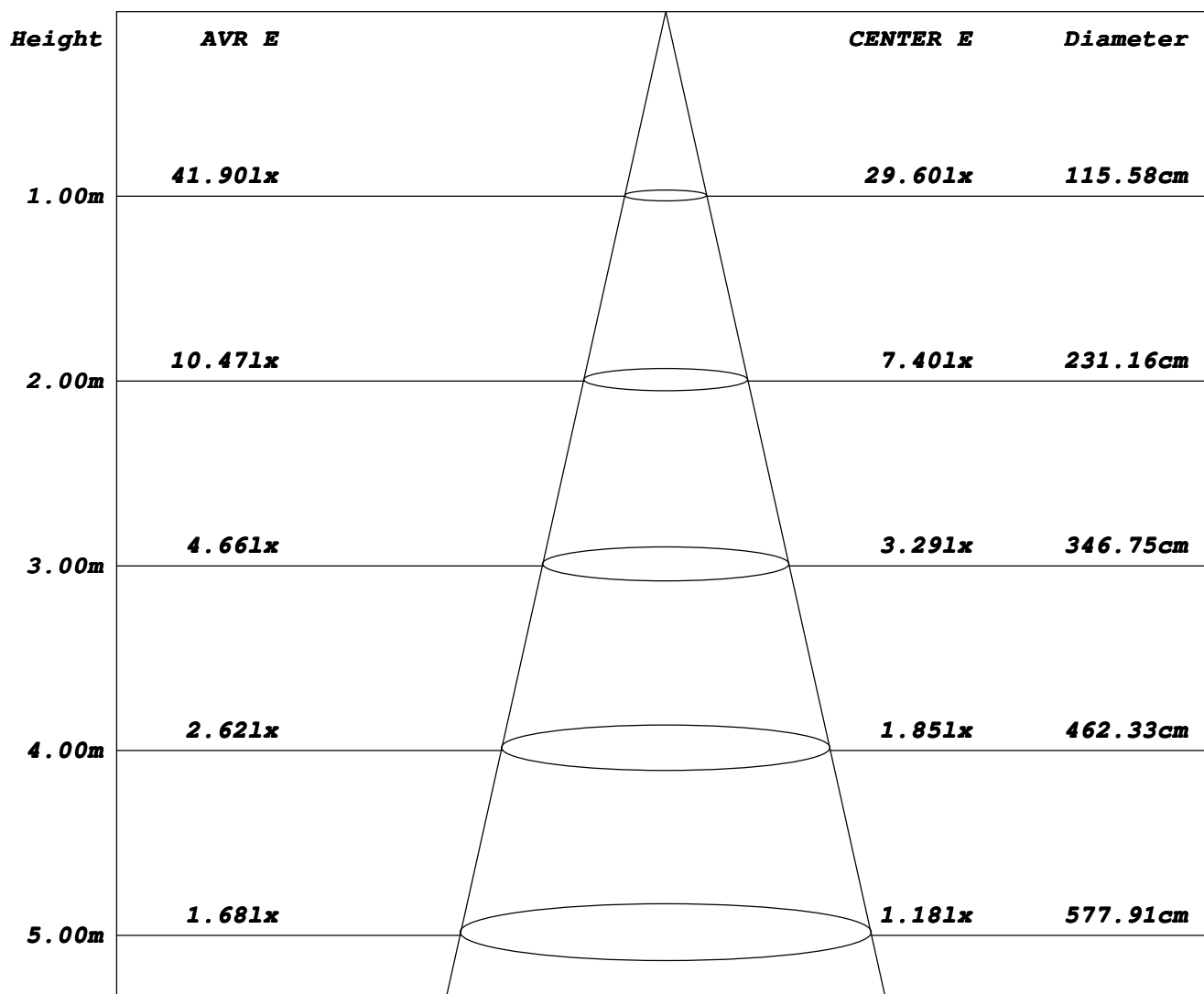
Test System: LSG-1800
 Temperature: 25.3 DEG
 Operators: G
 Test Date: 10-24-2018

Test Set: 5.0 deg/s C-Gamma (TYPE C)
 Humidity: 65.0%
 Test Distance: 10.000 m
 Remarks: 48W HES

AVERAGE AND CENTER E Figure

Report number: GO2018-262

MANUFACTURER: IDEAL LUX SRL	Address: Via Taglio Destro 32 - Mirano (VE)	
NAME: 110875 - KRONPLATZ TL1	TYPE: TABLE	WEIGHT:
SPECIFICATION:	DIMENSION: 240x130x380	SERIAL No.:



Angle: 60.0deg

Test System: LSG-1800
 Temperature: 25.3DEG
 Operators: G
 Test Date: 10-24-2018

Test Set: 5.0deg/s C-Gamma (TYPE C)
 Humidity: 65.0%
 Test Distance: 10.000 m
 Remarks: 48W HES

ZONAL FLUX DIAGRAM

Report number: GO2018-262

MANUFACTURER: IDEAL LUX SRL	Address: Via Taglio Destro 32 - Mirano (VE)	
NAME: 110875 - KRONPLATZ TL1	TYPE: TABLE	WEIGHT:
SPECIFICATION:	DIMENSION: 240x130x380	SERIAL No.:

γ	C0	C45	C90	C135	C180	C225	C270	C315	γ	zone	total
5.0	32.20	30.19	32.10	32.20	30.89	30.50	33.00	32.79	0- 5	0.739	0.739
10.0	35.29	32.20	45.29	38.20	34.40	33.39	36.19	37.79	5- 10	2.487	3.226
15.0	35.00	36.00	45.59	42.79	42.59	42.39	42.39	42.69	10- 15	4.563	7.789
20.0	39.09	43.00	49.70	49.09	54.29	54.29	56.69	52.00	15- 20	7.554	15.34
25.0	50.00	49.29	58.89	62.40	66.69	63.40	66.09	62.59	20- 25	11.72	27.07
30.0	59.10	54.40	77.70	73.50	74.90	70.00	76.80	71.20	25- 30	16.79	43.86
35.0	68.59	59.89	54.29	79.90	79.00	77.20	79.09	79.19	30- 35	21.75	65.61
40.0	77.90	65.10	48.89	90.90	85.00	84.89	55.90	86.69	35- 40	24.92	90.54
45.0	90.40	40.40	51.59	51.59	93.80	66.90	58.70	91.29	40- 45	26.62	117.1
50.0	93.80	38.80	51.79	39.59	84.30	40.79	59.79	54.90	45- 50	27.56	144.7
55.0	81.30	36.09	41.80	36.09	30.40	36.50	56.30	46.00	50- 55	24.92	169.6
60.0	29.69	32.30	33.50	30.00	26.00	30.79	37.29	42.39	55- 60	18.35	188.0
65.0	26.60	25.90	24.69	22.00	21.50	23.60	25.60	34.09	60- 65	14.29	202.3
70.0	23.29	19.50	19.10	16.00	16.30	17.60	19.10	25.00	65- 70	11.51	213.8
75.0	18.70	14.10	13.79	11.40	10.59	12.60	14.00	17.00	70- 75	8.877	222.7
80.0	12.50	9.800	9.800	7.900	6.400	8.700	9.900	11.70	75- 80	6.317	229.0
85.0	7.300	6.400	6.600	5.200	3.200	5.700	7.100	7.700	80- 85	4.236	233.2
90.0	3.100	4.600	5.800	5.800	3.900	5.300	5.800	5.100	85- 90	2.840	236.1
95.0	5.300	7.600	8.900	10.59	7.800	8.700	8.900	6.900	90- 95	3.419	239.5
100.0	9.700	11.30	14.50	15.70	12.50	13.20	14.20	11.30	95-100	5.526	245.0
105.0	14.50	16.00	17.80	20.20	17.70	18.90	19.90	18.09	100-105	8.139	253.2
110.0	18.29	21.90	22.70	26.69	25.40	28.79	24.79	25.29	105-110	10.94	264.1
115.0	42.50	27.29	26.80	34.59	80.19	33.19	29.19	29.80	110-115	17.28	281.4
120.0	86.90	32.90	32.00	45.10	74.19	44.60	33.00	36.89	115-120	25.82	307.2
125.0	84.30	70.90	36.29	78.30	52.10	83.70	35.90	81.00	120-125	28.09	335.3
130.0	71.80	86.29	37.59	76.70	48.40	80.69	38.80	75.80	125-130	28.41	363.7
135.0	63.20	81.09	49.00	66.90	44.29	73.29	67.09	67.40	130-135	28.41	392.1
140.0	52.89	73.00	59.29	57.50	36.19	54.20	52.49	53.10	135-140	24.82	416.9
145.0	31.40	51.20	44.00	47.00	24.29	32.50	38.00	38.60	140-145	17.26	434.2
150.0	14.50	27.10	27.70	33.19	14.90	23.50	25.29	21.90	145-150	9.748	444.0
155.0	9.600	17.29	19.60	16.10	8.100	16.50	18.09	16.40	150-155	5.131	449.1
160.0	8.900	13.30	15.09	11.40	7.600	11.90	10.59	12.40	155-160	2.841	451.9
165.0	7.400	10.00	8.700	7.600	5.500	7.500	8.100	9.400	160-165	1.592	453.5
170.0	6.100	6.900	5.600	4.300	3.600	4.200	4.600	6.700	165-170	0.799	454.3
175.0	4.100	4.600	4.800	2.800	2.800	3.300	3.900	5.100	170-175	0.337	454.7
180.0	4.900	4.200	3.000	4.300	4.700	4.500	2.700	4.600	175-180	0.096	454.7
DEG	LUMINOUS INTENSITY: cd									UNIT: lm	

Test System: LSG-1800
 Temperature: 25.3 DEG
 Operators: G
 Test Date: 10-24-2018

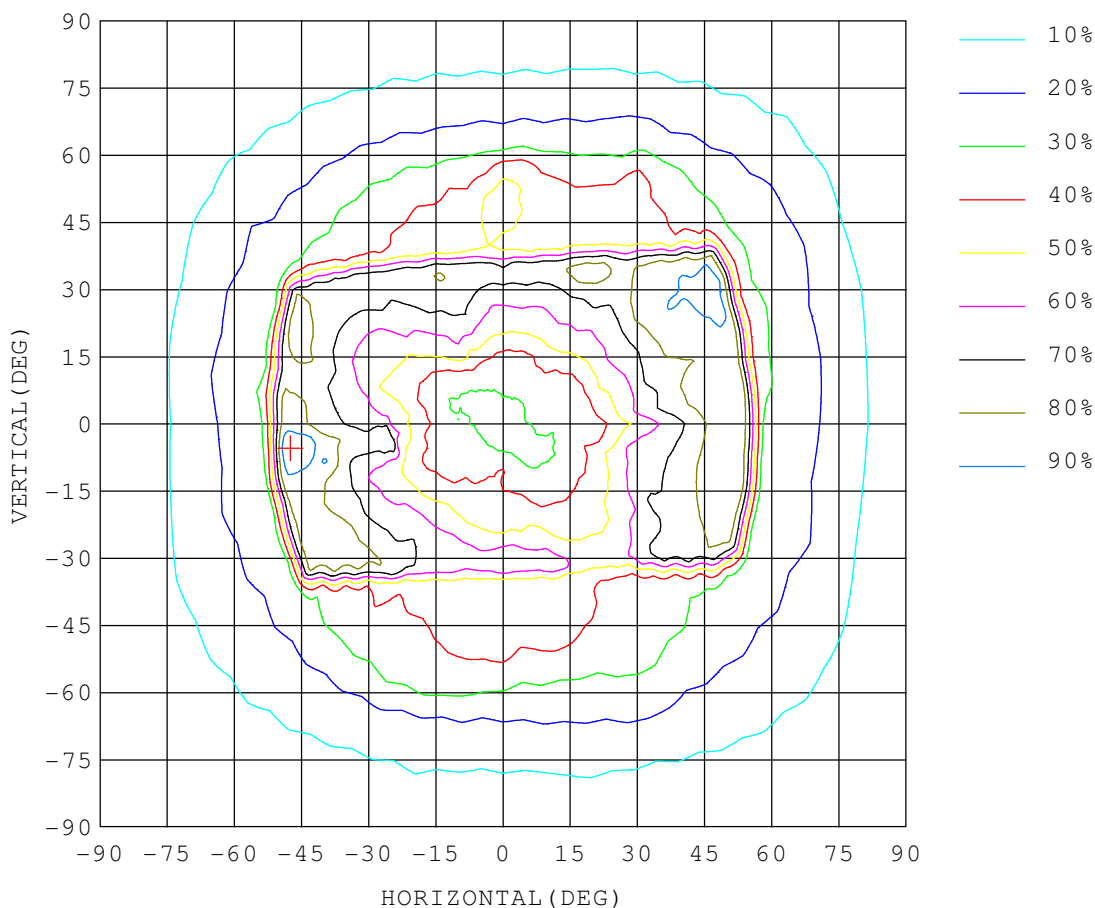
Test Set: 5.0 deg/s C-Gamma (TYPE C)
 Humidity: 65.0%
 Test Distance: 10.000 m
 Remarks: 48W HES

ISOCANDELA DIAGRAM

Report number: GO2018-262

MANUFACTURER: IDEAL LUX SRL	Address: Via Taglio Destro 32 - Mirano (VE)	
NAME: 110875 - KRONPLATZ TL1	TYPE: TABLE	WEIGHT:
SPECIFICATION:	DIMENSION: 240x130x380	SERIAL No.:

UNIT: cd



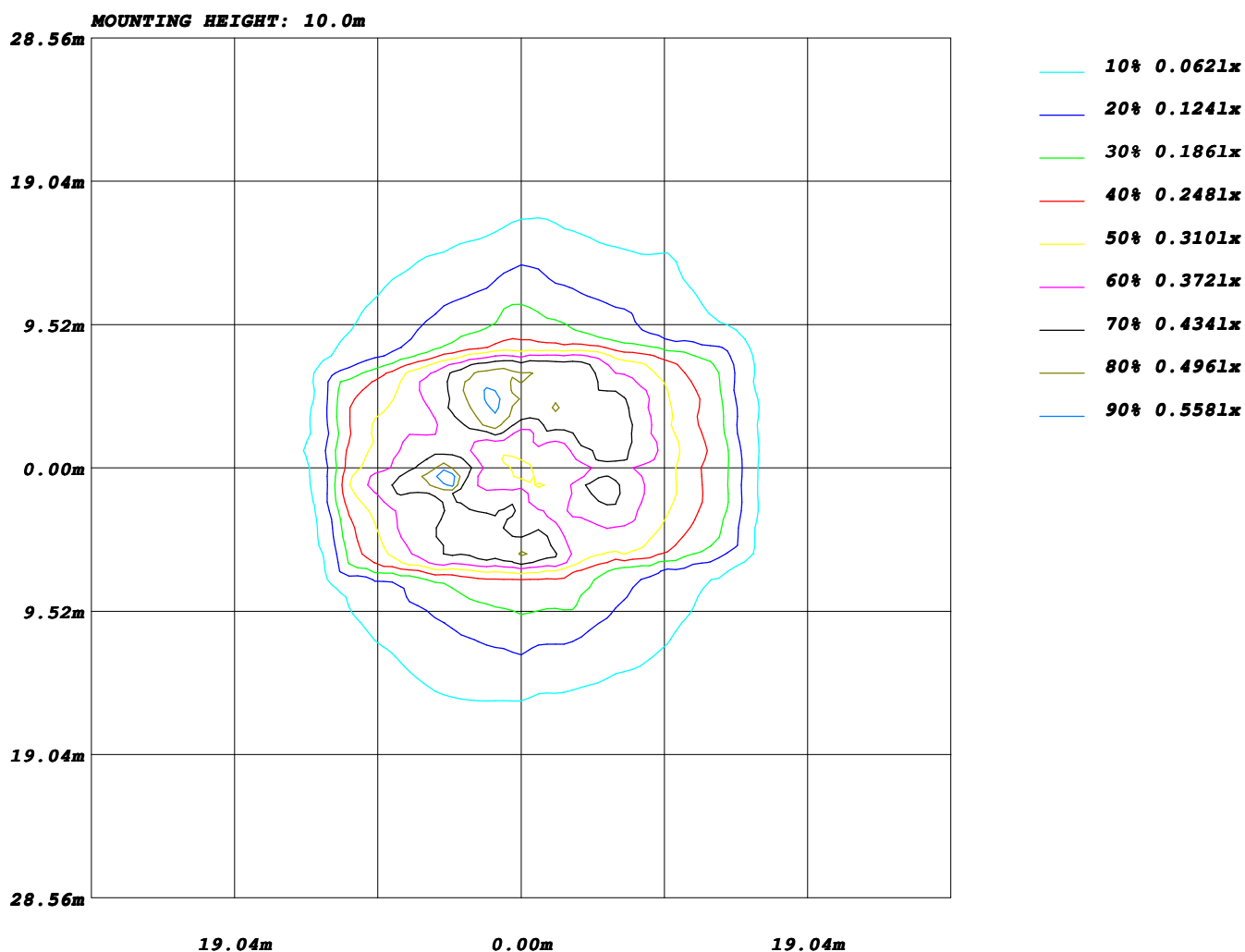
Test System: LSG-1800
Temperature: 25.3DEG
Operators: G
Test Date: 10-24-2018

Test Set: 5.0deg/s C-Gamma (TYPE C)
Humidity: 65.0%
Test Distance: 10.000 m
Remarks: 48W HES

ISOLUX DIAGRAM

Report number: GO2018-262

MANUFACTURER: IDEAL LUX SRL	Address: Via Taglio Destro 32 - Mirano (VE)	
NAME: 110875 - KRONPLATZ TL1	TYPE: TABLE	WEIGHT:
SPECIFICATION:	DIMENSION: 240x130x380	SERIAL No.:



Test System: LSG-1800
 Temperature: 25.3DEG
 Operators: G
 Test Date: 10-24-2018

Test Set: 5.0deg/s C-Gamma (TYPE C)
 Humidity: 65.0%
 Test Distance: 10.000 m
 Remarks: 48W HES

AREA LUMINOUS FLUX

Report number: GO2018-262

MANUFACTURER: IDEAL LUX SRL	Address: Via Taglio Destro 32 - Mirano (VE)	
NAME: 110875 - KRONPLATZ TL1	TYPE: TABLE	WEIGHT:
SPECIFICATION:	DIMENSION: 240x130x380	SERIAL No.:

		AREA FLUX DIAGRAM																UNIT:lm		Φ t	Φ a		
VERTICAL (DEG)	90	0.01	0.03	0.05	0.08	0.12	0.15	0.19	0.21	0.23	0.23	0.22	0.21	0.18	0.14	0.10	0.06	0.03	0.01	2.26	0.00		
	80	0.01	0.03	0.07	0.12	0.19	0.27	0.34	0.40	0.43	0.45	0.44	0.41	0.34	0.25	0.17	0.10	0.05	0.01	4.08	2.73		
	70	0.01	0.04	0.10	0.19	0.31	0.46	0.60	0.71	0.80	0.83	0.79	0.75	0.63	0.44	0.28	0.15	0.06	0.01	7.15	6.74		
	60	0.01	0.05	0.14	0.28	0.46	0.70	0.95	1.14	1.40	1.53	1.27	1.20	1.01	0.65	0.41	0.22	0.08	0.01	11.5	11.3		
	50	0.01	0.06	0.18	0.38	0.62	0.90	1.19	1.41	1.65	1.67	1.50	1.40	1.17	0.91	0.51	0.28	0.10	0.02	14.0	13.8		
	40	0.01	0.07	0.23	0.46	1.02	1.54	1.93	2.21	2.29	2.26	2.36	2.28	2.21	1.95	0.68	0.33	0.12	0.02	22.0	21.9		
	30	0.01	0.08	0.26	0.53	1.83	2.03	2.11	2.32	2.17	2.02	2.14	2.26	2.41	2.18	0.94	0.34	0.13	0.02	23.8	23.7		
			0.01	0.09	0.28	0.63	1.90	1.82	1.64	1.66	1.52	1.40	1.62	1.93	2.17	2.03	1.13	0.36	0.15	0.02	20.4	20.3	
			0.01	0.09	0.29	0.73	1.92	1.87	1.63	1.19	1.00	1.08	1.15	1.60	1.96	2.00	1.26	0.36	0.15	0.02	18.3	18.3	
			0.01	0.09	0.27	0.70	2.19	2.13	1.94	1.25	1.08	1.00	1.11	1.57	1.86	1.94	1.23	0.34	0.15	0.02	18.9	18.8	
			0.01	0.09	0.27	0.60	2.01	2.06	1.81	1.55	1.46	1.29	1.32	1.67	1.98	1.98	1.15	0.33	0.14	0.02	19.8	19.7	
	-30		0.01	0.09	0.25	0.47	1.75	2.28	2.22	2.09	1.87	1.85	1.66	1.72	2.00	1.92	0.89	0.32	0.13	0.02	21.5	21.5	
	-40		0.01	0.08	0.22	0.41	1.07	1.62	1.77	1.76	1.76	1.63	1.33	1.21	0.99	0.52	0.28	0.12	0.02	16.6	16.5		
	-50		0.01	0.06	0.18	0.34	0.60	0.92	1.16	1.35	1.47	1.48	1.41	1.15	0.92	0.67	0.43	0.24	0.10	0.02	12.5	12.4	
	-60		0.01	0.05	0.14	0.27	0.45	0.71	0.99	1.21	1.27	1.19	1.09	0.97	0.79	0.54	0.35	0.19	0.08	0.01	10.3	10.1	
	-70		0.01	0.04	0.10	0.18	0.30	0.44	0.60	0.73	0.76	0.75	0.73	0.66	0.55	0.37	0.24	0.14	0.06	0.01	6.68	6.23	
-80		0.01	0.03	0.06	0.12	0.18	0.25	0.33	0.40	0.41	0.42	0.43	0.38	0.30	0.23	0.16	0.09	0.05	0.01	3.86	2.29		
-90		0.01	0.03	0.05	0.08	0.11	0.15	0.17	0.19	0.21	0.21	0.21	0.19	0.16	0.13	0.09	0.06	0.03	0.01	2.08	0.00		
		-90	-80	-70	-60	-50	-40	-30	-20	HORIZONTAL (DEG)				20	30	40	50	60	70	80	90		
Φ t		0.18	1.10	3.13	6.57	17.0	20.3	21.6	21.8	21.8	21.4	21.1	21.7	21.9	19.3	10.5	4.21	1.71	0.30	455			
Φ a		0.00	0.36	2.50	5.94	16.4	19.7	21.0	21.2	21.2	20.9	20.6	21.2	21.3	18.8	10.0	3.75	1.24	0.03		435		

Test System: LSG-1800
 Temperature: 25.3DEG
 Operators: G
 Test Date: 10-24-2018

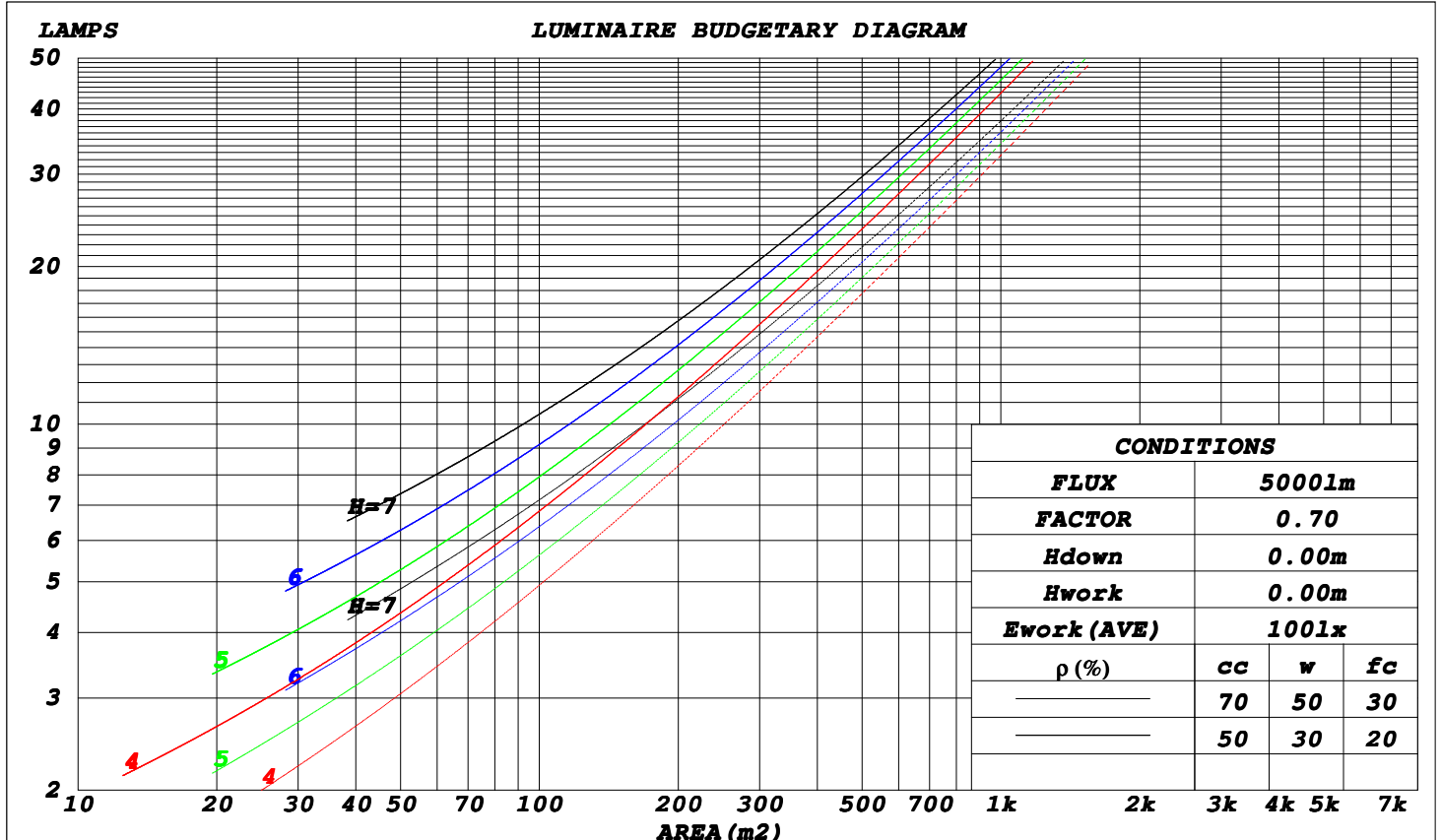
Test Set: 5.0deg/s C-Gamma (TYPE C)
 Humidity: 65.0%
 Test Distance: 10.000 m
 Remarks: 48W HES

CU AND LUMINAIRE BUDGETARY ESTIMATE DIAGRAM

Report number: GO2018-262

MANUFACTURER: IDEAL LUX SRL				Address: Via Taglio Destro 32 - Mirano (VE)											
NAME: 110875 - KRONPLATZ TL1				TYPE: TABLE						WEIGHT:					
SPECIFICATION:				DIMENSION: 240x130x380						SERIAL No.:					

ρ_{cc}	80%			70%			50%			30%			10%			0
ρ_w	50%	30%	10%	50%	30%	10%	50%	30%	10%	50%	30%	10%	50%	30%	10%	0
ρ_{fc}	20%			20%			20%			20%			20%			0
RCR	RCR: Room Cavity Ratio						Coefficients of Utilization (CU)									
0.0	1.08	1.08	1.08	.00	.00	.00	.84	.84	.84	.71	.71	.71	.58	.58	.58	.52
1.0	.93	.89	.85	.86	.83	.80	.73	.71	.68	.61	.60	.58	.50	.49	.48	.43
2.0	.81	.75	.69	.75	.69	.65	.64	.60	.56	.53	.50	.48	.44	.42	.40	.35
3.0	.71	.63	.57	.65	.59	.53	.56	.51	.46	.47	.43	.40	.38	.36	.33	.29
4.0	.62	.54	.48	.58	.50	.45	.49	.43	.39	.41	.37	.33	.34	.31	.28	.24
5.0	.55	.46	.40	.51	.43	.38	.43	.38	.33	.37	.32	.28	.30	.27	.24	.21
6.0	.49	.40	.34	.45	.38	.32	.39	.33	.28	.33	.28	.24	.27	.23	.21	.18
7.0	.44	.35	.30	.41	.33	.28	.35	.29	.24	.29	.25	.21	.24	.21	.18	.15
8.0	.39	.31	.26	.37	.29	.24	.31	.26	.21	.27	.22	.18	.22	.18	.16	.13
9.0	.36	.28	.23	.33	.26	.21	.29	.23	.19	.24	.20	.16	.20	.16	.14	.11
10.0	.32	.25	.20	.30	.23	.19	.26	.20	.17	.22	.18	.14	.18	.15	.12	.10



Test System: LSG-1800
Temperature: 25.3DEG
Operators: G
Test Date: 10-24-2018

Test Set: 5.0deg/s C-Gamma (TYPE C)
Humidity: 65.0%
Test Distance: 10.000 m
Remarks: 48W HES

WEC AND CCEC

Report number: GO2018-262

MANUFACTURER: IDEAL LUX SRL	Address: Via Taglio Destro 32 - Mirano (VE)					
NAME: 110875 - KRONPLATZ TL1	TYPE: TABLE			WEIGHT:		
SPECIFICATION:	DIMENSION: 240x130x380			SERIAL No.:		

ρ_{cc}	80%			70%			50%			30%			10%			0
ρ_w	50%	30%	10%	50%	30%	10%	50%	30%	10%	50%	30%	10%	50%	30%	10%	0
ρ_{fc}	20%			20%			20%			20%			20%			0
RCR	RCR:Room Cavity Ratio						Wall Exitance Coefficients (WEC)									
0.0																
1.0	.293	.167	.053	.271	.155	.049	.231	.133	.042	.194	.112	.036	.160	.093	.030	
2.0	.272	.149	.046	.252	.139	.043	.215	.120	.037	.181	.102	.032	.150	.085	.027	
3.0	.251	.134	.040	.233	.125	.038	.200	.108	.033	.168	.092	.028	.139	.077	.024	
4.0	.232	.121	.035	.216	.113	.033	.185	.098	.029	.156	.084	.025	.130	.070	.021	
5.0	.215	.110	.032	.200	.103	.030	.172	.089	.026	.145	.077	.023	.121	.064	.019	
6.0	.200	.100	.029	.186	.094	.027	.160	.082	.024	.135	.070	.021	.112	.059	.018	
7.0	.187	.092	.026	.174	.087	.025	.150	.076	.022	.127	.065	.019	.105	.055	.016	
8.0	.175	.085	.024	.163	.080	.023	.140	.070	.020	.119	.060	.017	.099	.051	.015	
9.0	.164	.079	.022	.153	.075	.021	.132	.065	.018	.112	.056	.016	.093	.047	.014	
10.0	.154	.074	.021	.144	.070	.019	.124	.061	.017	.106	.052	.015	.088	.044	.013	

ρ_{cc}	80%			70%			50%			30%			10%			0
ρ_w	50%	30%	10%	50%	30%	10%	50%	30%	10%	50%	30%	10%	50%	30%	10%	0
ρ_{fc}	20%			20%			20%			20%			20%			0
RCR	RCR:Room Cavity Ratio						Ceiling Cavity Exitance Coefficients (CCEC)									
0.0	.557	.557	.557	.476	.476	.476	.325	.325	.325	.187	.187	.187	.060	.060	.060	
1.0	.549	.526	.505	.469	.451	.435	.321	.310	.301	.185	.180	.175	.059	.058	.057	
2.0	.541	.504	.472	.464	.434	.408	.318	.300	.285	.183	.175	.167	.059	.056	.054	
3.0	.535	.488	.451	.458	.421	.391	.315	.292	.274	.182	.171	.162	.058	.055	.053	
4.0	.528	.476	.436	.453	.411	.379	.312	.287	.267	.180	.168	.158	.058	.055	.052	
5.0	.522	.467	.426	.448	.404	.371	.309	.282	.262	.179	.166	.155	.058	.054	.051	
6.0	.516	.459	.419	.443	.398	.365	.306	.278	.258	.177	.164	.153	.057	.054	.051	
7.0	.510	.453	.414	.438	.393	.361	.303	.275	.255	.176	.162	.152	.057	.053	.050	
8.0	.504	.448	.410	.434	.389	.357	.300	.273	.253	.175	.161	.151	.057	.053	.050	
9.0	.499	.444	.407	.430	.385	.355	.298	.271	.252	.173	.160	.150	.056	.052	.050	
10.0	.494	.440	.404	.425	.382	.353	.295	.269	.251	.172	.159	.150	.056	.052	.050	

Test System: LSG-1800
 Temperature: 25.3 DEG
 Operators: G
 Test Date: 10-24-2018

Test Set: 5.0 deg/s C-Gamma (TYPE C)
 Humidity: 65.0%
 Test Distance: 10.000 m
 Remarks: 48W HES

Uncorrected UGR Table

Report number: GO2018-262

MANUFACTURER: IDEAL LUX SRL	Address: Via Taglio Destro 32 - Mirano (VE)			
NAME: 110875 - KRONPLATZ TL1	TYPE: TABLE		WEIGHT:	
SPECIFICATION:	DIMENSION: 240x130x380		SERIAL No.:	

ceiling/cavity	0.7	0.7	0.5	0.5	0.3	0.7	0.7	0.5	0.5	0.3
walls	0.5	0.3	0.5	0.3	0.3	0.5	0.3	0.5	0.3	0.3
working plane	0.2	0.2	0.2	0.2	0.2	0.2	0.2	0.2	0.2	0.2

Room dimensions	Viewed crosswise					Viewed endwise				
x = 2H y = 2H	10.5	11.5	11.4	12.4	13.4	8.0	9.0	8.9	9.9	10.9
3H	11.3	12.2	12.1	13.0	14.1	9.3	10.2	10.2	11.1	12.2
4H	11.7	12.6	12.6	13.4	14.6	9.8	10.7	10.7	11.6	12.7
6H	12.1	12.9	13.0	13.8	14.9	10.3	11.1	11.2	12.0	13.1
8H	12.3	13.0	13.2	13.9	15.1	10.5	11.2	11.4	12.1	13.3
12H	12.4	13.1	13.3	14.0	15.2	10.7	11.4	11.6	12.3	13.5
4H 2H	10.5	11.4	11.4	12.2	13.4	8.5	9.4	9.4	10.3	11.4
3H	11.5	12.2	12.4	13.1	14.3	10.0	10.7	10.9	11.7	12.8
4H	12.1	12.7	13.0	13.6	14.8	10.7	11.4	11.7	12.3	13.5
6H	12.6	13.1	13.5	14.1	15.3	11.3	11.9	12.3	12.8	14.1
8H	12.8	13.3	13.8	14.3	15.5	11.6	12.1	12.6	13.1	14.3
12H	13.0	13.5	14.0	14.5	15.7	11.9	12.3	12.9	13.3	14.6
8H 4H	12.1	12.6	13.1	13.6	14.8	10.9	11.4	11.9	12.4	13.6
6H	12.8	13.2	13.8	14.2	15.4	11.7	12.1	12.7	13.1	14.4
8H	13.1	13.5	14.1	14.5	15.8	12.1	12.5	13.1	13.5	14.7
12H	13.4	13.8	14.5	14.8	16.1	12.5	12.8	13.5	13.9	15.2
12H 4H	12.1	12.5	13.0	13.5	14.8	10.9	11.3	11.9	12.3	13.6
6H	12.8	13.1	13.8	14.1	15.4	11.7	12.1	12.7	13.1	14.4
8H	13.2	13.5	14.2	14.5	15.8	12.2	12.5	13.2	13.5	14.8

Variations with the observer position at spacings:

S = 1.0H	+ 0.4 / - 0.3	+ 0.1 / - 0.0
1.5H	+ 1.1 / - 1.2	+ 0.3 / - 0.3
2.0H	+ 2.0 / - 1.4	+ 0.2 / - 0.4

CIE Pub.117 Corrected 454.7 lm Total Lamp Luminous Flux. (8log(F/F0) = -2.7)

Test System: LSG-1800
 Temperature: 25.3 DEG
 Operators: G
 Test Date: 10-24-2018

Test Set: 5.0 deg/s C-Gamma (TYPE C)
 Humidity: 65.0%
 Test Distance: 10.000 m
 Remarks: 48W HES

UTILIZATION FACTORS TABLE

Report number: GO2018-262

MANUFACTURER: IDEAL LUX SRL	Address: Via Taglio Destro 32 - Mirano (VE)	
NAME: 110875 - KRONPLATZ TL1	TYPE: TABLE	WEIGHT:
SPECIFICATION:	DIMENSION: 240x130x380	SERIAL No.:

REFLECTANCE										
Ceiling	0.8	0.8	0.8	0.7	0.7	0.7	0.5	0.5	0.5	0
Walls	0.7	0.5	0.3	0.7	0.5	0.3	0.7	0.5	0.3	0
Working plane	0.2	0.2	0.2	0.2	0.2	0.2	0.2	0.2	0.2	0
ROOM INDEX	UTILIZATION FACTORS (PERCENT) $k(RI) \times RCR = 5$									
k = 0.60	42	30	24	39	29	23	35	26	21	14
0.80	52	40	32	49	38	31	43	34	28	19
1.00	60	48	40	56	46	39	50	42	35	24
1.25	67	56	48	63	53	46	55	47	41	28
1.50	73	62	54	68	58	51	59	51	46	31
2.00	80	70	63	75	66	60	64	58	53	35
2.50	84	76	69	78	71	65	68	62	57	37
3.00	88	80	74	82	75	69	70	65	61	40
4.00	92	86	80	86	80	75	73	69	65	42
5.00	95	89	84	88	83	79	75	72	68	44
ROOM INDEX	UF(total)									Direct
According to DIN EN 13032-2 2004			Suspended				SHRNOM = 1.25			

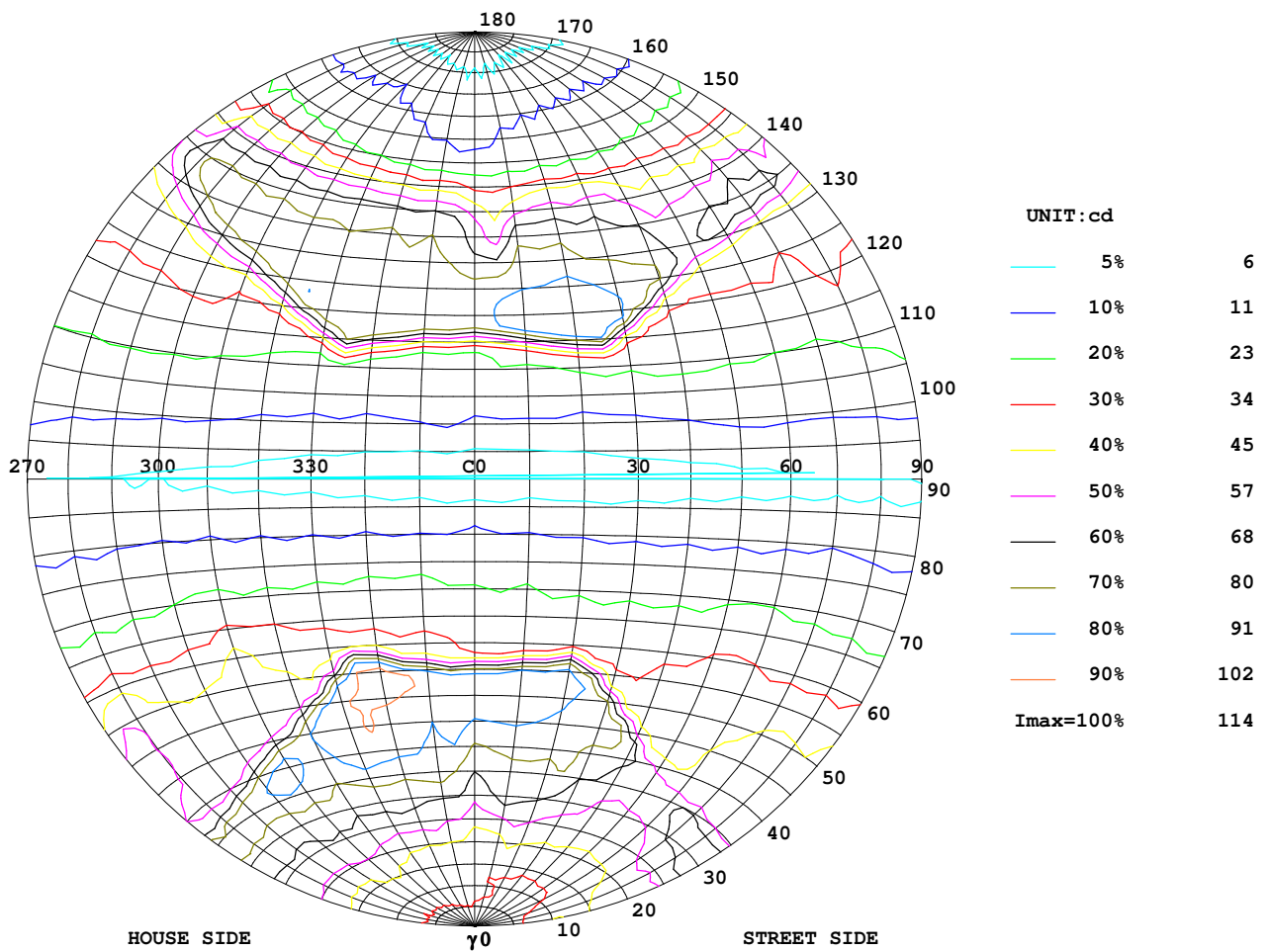
Test System: LSG-1800
 Temperature: 25.3 DEG
 Operators: G
 Test Date: 10-24-2018

Test Set: 5.0 deg/s C-Gamma (TYPE C)
 Humidity: 65.0%
 Test Distance: 10.000 m
 Remarks: 48W HES

ISOCANDELA DIAGRAM

Report number: GO2018-262

MANUFACTURER: IDEAL LUX SRL	Address: Via Taglio Destro 32 - Mirano (VE)	
NAME: 110875 - KRONPLATZ TL1	TYPE: TABLE	WEIGHT:
SPECIFICATION:	DIMENSION: 240x130x380	SERIAL No.:



Test System: LSG-1800
 Temperature: 25.3 DEG
 Operators: G
 Test Date: 10-24-2018

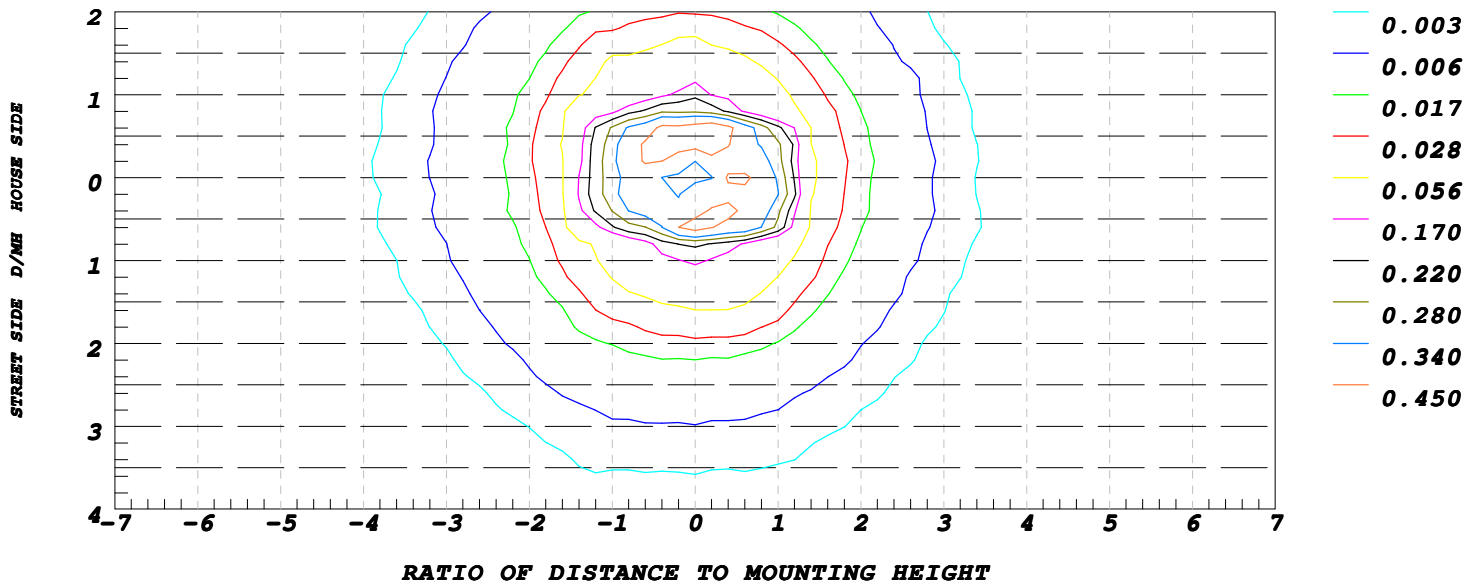
Test Set: 5.0 deg/s C-Gamma (TYPE C)
 Humidity: 65.0%
 Test Distance: 10.000 m
 Remarks: 48W HES

ISOLUX DIAGRAM

Report number: GO2018-262

MANUFACTURER: IDEAL LUX SRL	Address: Via Taglio Destro 32 - Mirano (VE)	
NAME: 110875 - KRONPLATZ TL1	TYPE: TABLE	WEIGHT:
SPECIFICATION:	DIMENSION: 240x130x380	SERIAL No.:

ILLUMINANCE AT MH=10 m, Enadir = 0.30 lx



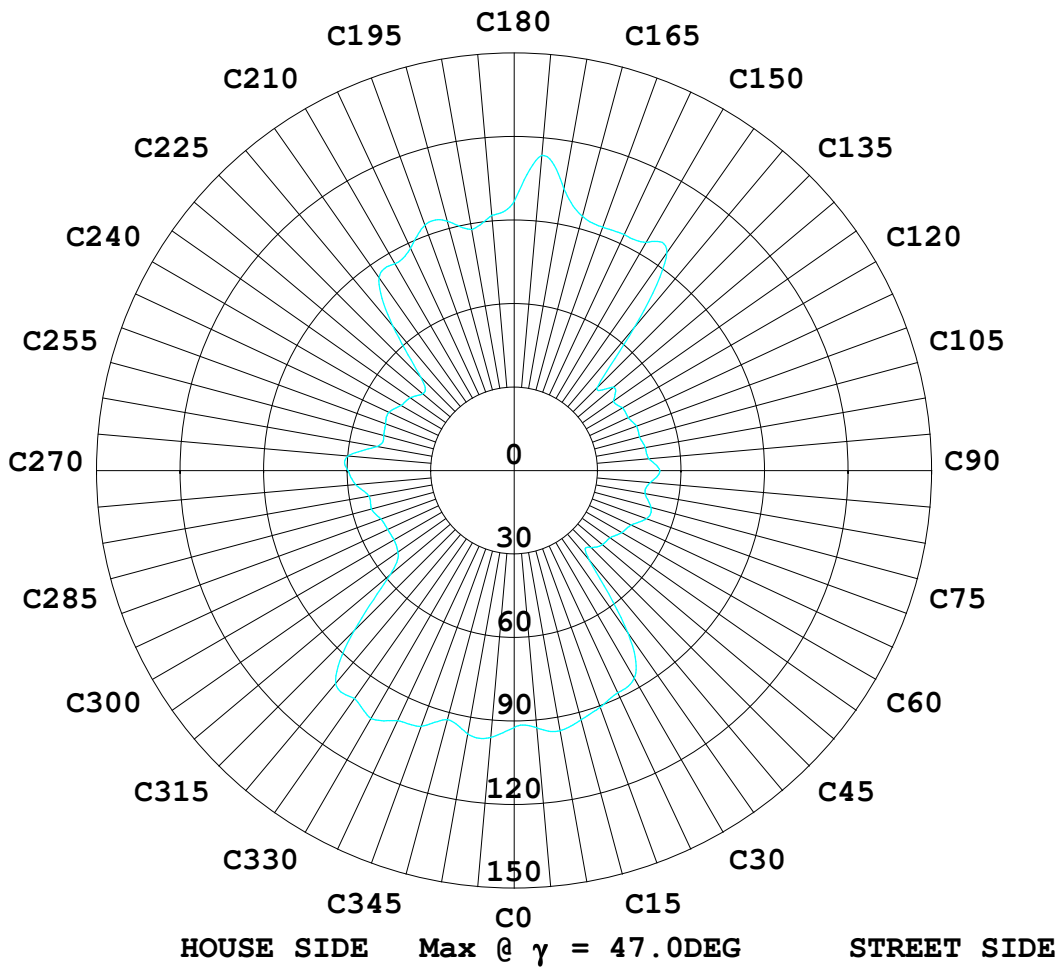
Test System: LSG-1800
 Temperature: 25.3 DEG
 Operators: G
 Test Date: 10-24-2018

Test Set: 5.0deg/s C-Gamma (TYPE C)
 Humidity: 65.0%
 Test Distance: 10.000 m
 Remarks: 48W HES

ISOCANDELA DIAGRAM

Report number: GO2018-262

MANUFACTURER: IDEAL LUX SRL	Address: Via Taglio Destro 32 - Mirano (VE)	
NAME: 110875 - KRONPLATZ TL1	TYPE: TABLE	WEIGHT:
SPECIFICATION:	DIMENSION: 240x130x380	SERIAL No.:



Test System: LSG-1800
 Temperature: 25.3DEG
 Operators: G
 Test Date: 10-24-2018

Test Set: 5.0deg/s C-Gamma (TYPE C)
 Humidity: 65.0%
 Test Distance: 10.000 m
 Remarks: 48W HES

LUMINOUS DISTRIBUTION INTENSITY DATA

Report number: GO2018-262

MANUFACTURER: IDEAL LUX SRL	Address: Via Taglio Destro 32 - Mirano (VE)	
NAME: 110875 - KRONPLATZ TL1	TYPE: TABLE	WEIGHT:
SPECIFICATION:	DIMENSION: 240x130x380	SERIAL No.:

UNIT: cd

C (DEG) \ γ (DEG)	0	5	10	15	20	25	30	35	40	45	50	55	60	65	70
0.0	29.6	29.4	29.4	29.3	29.3	29.1	29.1	29.0	29.1	28.9	29.3	29.1	29.6	29.6	29.9
5.0	32.2	32.1	31.4	31.0	30.7	30.7	30.4	30.5	30.1	30.1	30.1	30.1	30.5	30.8	31.4
10.0	35.2	34.9	34.4	34.2	33.7	33.7	32.9	32.6	32.1	32.2	32.0	32.6	33.5	35.0	36.8
15.0	35.0	35.6	35.4	36.3	35.6	36.0	35.5	36.0	35.7	36.0	36.0	37.0	36.7	38.5	39.8
20.0	39.0	39.7	40.7	48.1	45.4	44.2	43.5	44.1	43.0	43.0	43.2	44.7	44.7	45.1	47.4
25.0	50.0	52.0	55.5	60.2	57.3	53.6	52.7	52.4	51.3	49.2	48.5	49.2	50.8	52.7	58.7
30.0	59.1	66.3	72.2	69.9	69.4	65.9	60.7	60.2	54.5	54.4	55.1	56.0	57.5	62.0	70.0
35.0	68.5	74.0	76.5	77.5	78.0	78.0	68.5	67.9	62.5	59.8	61.0	63.0	65.6	68.1	65.9
40.0	77.9	81.0	82.2	82.4	81.1	81.5	76.9	76.5	72.0	65.1	52.4	46.5	47.2	46.9	53.7
45.0	90.4	91.1	92.4	90.8	89.5	87.9	84.7	82.5	54.2	40.4	41.2	42.5	45.5	47.2	53.7
50.0	93.8	95.0	98.0	95.5	93.3	88.5	80.5	39.7	38.1	38.8	40.7	41.1	43.7	43.2	46.5
55.0	81.3	81.4	90.4	89.3	93.3	68.6	35.5	33.7	36.0	36.0	38.2	39.0	40.2	38.2	39.3
60.0	29.6	27.9	29.6	28.0	31.5	28.9	30.7	30.7	32.7	32.3	34.5	35.0	34.4	31.6	32.2
65.0	26.6	25.7	27.7	25.4	25.9	24.9	26.8	26.1	26.9	25.9	30.3	28.0	28.0	26.0	26.6
70.0	23.2	22.3	23.6	21.1	21.9	20.2	20.9	20.0	20.6	19.5	21.4	22.3	22.1	20.4	20.7
75.0	18.7	17.6	18.5	16.2	16.6	15.0	15.2	14.4	15.0	14.1	14.8	14.1	15.0	15.0	16.9
80.0	12.5	11.4	11.7	10.9	10.9	10.1	10.5	9.90	10.4	9.80	10.5	9.80	10.5	10.1	11.1
85.0	7.30	6.40	7.00	6.50	6.50	6.00	6.50	6.10	6.70	6.40	6.90	6.60	7.00	6.70	7.00
90.0	3.10	2.90	3.30	3.30	3.60	3.80	4.10	4.20	4.60	4.60	5.00	5.00	5.30	5.30	5.60
95.0	5.30	6.10	5.60	5.80	5.80	6.40	6.20	6.60	6.70	7.60	7.50	7.90	8.10	8.29	8.29
100.0	9.70	12.5	11.0	10.5	9.90	10.8	10.2	10.7	10.5	11.3	11.7	12.1	11.7	12.3	12.4
105.0	14.5	15.9	15.0	14.7	13.7	15.2	15.0	15.5	15.0	16.0	16.2	16.6	16.5	17.4	19.1
110.0	18.2	18.6	17.6	18.7	18.0	20.2	19.2	20.2	20.9	21.9	22.2	23.5	23.1	23.4	23.0
115.0	42.5	47.0	46.2	57.4	65.2	80.9	45.4	26.6	26.1	27.2	29.6	30.5	29.1	29.1	27.5
120.0	86.9	87.5	88.4	86.9	87.0	88.2	88.0	74.6	43.7	32.9	32.9	35.6	35.0	33.7	32.2
125.0	84.3	84.5	87.1	86.2	87.5	88.0	88.0	90.5	85.0	70.9	49.7	45.5	41.7	39.2	36.7
130.0	71.8	79.0	82.5	81.4	82.7	82.9	83.2	85.1	84.5	86.2	84.6	79.5	68.6	58.9	48.2
135.0	63.2	75.4	79.7	78.0	80.5	79.9	79.4	81.0	80.2	81.0	83.9	85.0	88.4	85.2	80.0
140.0	52.8	64.0	68.3	66.2	70.8	71.6	72.3	72.2	73.5	73.0	75.5	74.2	78.0	78.0	82.4
145.0	31.4	38.9	40.9	39.7	44.2	45.1	47.6	48.4	51.0	51.2	55.5	55.6	59.7	58.3	60.3
150.0	14.5	13.7	16.4	16.1	18.7	19.1	23.0	23.1	26.3	27.1	31.7	31.7	34.9	33.7	36.1
155.0	9.60	8.70	11.0	10.9	13.2	13.2	16.0	16.0	18.0	17.2	19.2	18.1	19.6	18.5	20.1
160.0	8.90	7.80	9.40	9.00	11.0	10.4	12.3	12.0	13.7	13.3	14.4	13.3	14.3	13.0	14.3
165.0	7.40	6.50	7.80	7.40	8.80	8.50	10.0	9.80	11.4	10.0	10.8	10.0	10.8	9.60	9.90
170.0	6.10	5.40	6.40	6.00	7.40	7.30	8.29	7.50	8.70	6.90	7.60	6.90	7.80	7.00	7.60
175.0	4.10	3.50	4.20	4.00	4.90	4.40	5.20	4.70	5.20	4.60	5.20	4.60	5.20	4.50	5.00
180.0	4.90	4.50	4.90	4.70	5.20	4.80	5.10	4.70	4.80	4.20	4.30	3.90	4.20	3.70	3.80

Test System: LSG-1800
Temperature: 25.3 DEG
Operators: G
Test Date: 10-24-2018

Test Set: 5.0deg/s C-Gamma (TYPE C)
Humidity: 65.0%
Test Distance: 10.000 m
Remarks: 48W HES

LUMINOUS DISTRIBUTION INTENSITY DATA

Report number: GO2018-262

MANUFACTURER: IDEAL LUX SRL	Address: Via Taglio Destro 32 - Mirano (VE)	
NAME: 110875 - KRONPLATZ TL1	TYPE: TABLE	WEIGHT:
SPECIFICATION:	DIMENSION: 240x130x380	SERIAL No.:

UNIT: cd

C (DEG) \ γ (DEG)	75	80	85	90	95	100	105	110	115	120	125	130	135	140	145
0.0	30.1	30.0	30.1	30.0	30.1	30.1	30.0	29.9	30.1	30.0	29.9	29.8	29.9	30.1	30.1
5.0	31.7	31.9	32.3	32.1	32.2	31.7	31.9	32.3	32.7	32.2	32.4	31.6	32.2	31.9	32.6
10.0	39.5	41.5	44.2	45.2	44.0	41.4	40.7	39.7	38.6	38.1	38.4	38.5	38.2	37.0	37.2
15.0	42.6	43.9	45.4	45.5	48.1	48.7	48.6	48.8	45.6	45.8	46.0	43.2	42.7	41.7	41.6
20.0	50.1	49.7	49.5	49.7	50.8	51.3	52.3	52.7	52.2	52.2	53.3	50.3	49.0	48.4	47.7
25.0	60.6	59.1	60.6	58.8	58.4	58.8	59.8	60.7	63.3	63.3	63.3	63.4	62.4	62.1	60.3
30.0	70.0	71.6	76.4	77.7	72.1	71.3	71.1	72.5	74.9	73.0	73.1	74.6	73.5	73.2	68.8
35.0	58.4	56.9	52.9	54.2	53.7	57.0	59.7	67.5	72.5	77.4	79.0	84.0	79.9	80.5	78.5
40.0	48.8	48.5	48.8	48.8	47.6	47.7	47.4	47.9	47.9	49.7	59.5	89.3	90.9	91.0	90.5
45.0	50.4	48.5	49.9	51.5	48.4	48.1	46.9	47.4	46.2	46.2	44.6	48.1	51.5	89.5	94.5
50.0	48.5	46.2	45.5	51.7	48.0	47.5	45.8	45.5	43.2	43.0	41.5	44.2	39.5	40.2	75.0
55.0	39.5	39.8	37.7	41.8	42.2	43.3	43.2	43.3	40.7	39.0	37.4	37.9	36.0	36.3	33.0
60.0	31.7	32.4	31.0	33.5	34.0	36.1	37.7	38.5	35.5	35.7	32.5	32.6	30.0	30.0	27.2
65.0	25.7	25.7	24.2	24.6	23.6	24.9	24.4	25.7	25.0	28.2	23.7	24.2	22.0	22.5	21.1
70.0	19.5	19.6	18.4	19.1	17.8	19.0	18.2	18.9	17.2	17.7	16.6	17.5	16.0	16.6	15.7
75.0	14.5	14.2	13.3	13.7	12.9	14.1	13.7	14.2	12.4	12.9	11.8	12.2	11.4	11.9	10.9
80.0	10.7	10.0	9.20	9.80	9.09	9.80	9.20	10.5	9.00	9.00	8.29	8.60	7.90	8.10	7.30
85.0	6.50	6.80	6.30	6.60	6.20	6.60	6.00	6.20	5.80	6.00	5.60	5.70	5.20	5.20	4.60
90.0	5.60	5.70	5.60	5.80	5.70	5.90	5.90	6.00	5.90	6.00	6.00	5.80	5.80	5.40	5.30
95.0	8.60	8.60	8.80	8.90	9.00	9.00	9.09	9.09	9.60	9.40	9.60	9.90	10.5	8.90	8.90
100.0	12.9	12.8	13.7	14.5	13.3	12.9	13.2	13.2	14.2	13.9	14.5	15.7	15.7	14.1	14.5
105.0	17.9	17.4	17.7	17.8	18.0	18.0	18.7	18.5	19.3	19.3	20.2	19.7	20.2	20.2	21.1
110.0	23.1	22.3	22.6	22.7	22.7	23.1	23.7	24.2	25.0	25.0	25.7	26.8	26.6	25.6	26.9
115.0	27.5	26.8	27.0	26.8	27.4	28.2	29.3	29.3	29.4	29.3	30.7	34.2	34.5	33.5	51.2
120.0	32.2	31.5	31.7	32.0	34.4	33.5	33.3	32.9	34.0	34.7	37.0	37.0	45.1	64.3	94.3
125.0	37.0	35.5	35.1	36.2	37.9	37.7	36.8	36.7	37.9	39.3	45.5	52.1	78.3	86.6	86.5
130.0	43.5	40.7	39.5	37.5	39.3	41.4	46.7	51.7	62.8	69.5	68.5	71.9	76.7	77.5	75.3
135.0	71.6	61.2	53.5	49.0	62.9	77.8	78.4	81.6	80.0	75.3	65.8	64.9	66.9	67.9	65.8
140.0	81.4	78.0	66.3	59.2	69.4	78.7	73.7	72.5	71.2	65.8	57.5	57.7	57.5	56.9	55.0
145.0	59.3	60.1	43.7	44.0	59.8	68.4	61.6	61.0	60.5	53.7	49.2	49.2	47.0	46.0	43.0
150.0	35.0	36.5	26.4	27.7	40.0	43.0	40.5	40.5	37.5	37.9	35.1	35.7	33.1	32.5	28.9
155.0	19.0	20.6	18.6	19.6	19.4	21.9	18.6	19.3	18.7	19.5	17.2	17.8	16.1	17.1	15.2
160.0	13.5	15.2	13.5	15.0	13.6	12.9	11.3	12.4	11.7	12.7	11.5	12.5	11.4	12.3	11.1
165.0	8.50	9.00	8.00	8.70	7.80	8.29	7.30	8.29	7.40	8.40	7.50	8.40	7.60	8.29	6.80
170.0	6.10	6.20	5.30	5.60	4.90	5.60	4.90	5.40	4.60	5.20	4.40	5.10	4.30	5.00	4.20
175.0	4.10	4.90	4.30	4.80	4.10	4.70	4.00	4.50	3.80	4.20	3.30	3.70	2.80	3.30	2.70
180.0	3.30	3.30	2.70	3.00	2.70	3.60	3.60	4.00	3.70	4.10	3.90	4.40	4.30	4.80	4.70

Test System: LSG-1800
Temperature: 25.3 DEG
Operators: G
Test Date: 10-24-2018

Test Set: 5.0 deg/s C-Gamma (TYPE C)
Humidity: 65.0%
Test Distance: 10.000 m
Remarks: 48W HES

LUMINOUS DISTRIBUTION INTENSITY DATA

Report number: GO2018-262

MANUFACTURER: IDEAL LUX SRL	Address: Via Taglio Destro 32 - Mirano (VE)	
NAME: 110875 - KRONPLATZ TL1	TYPE: TABLE	WEIGHT:
SPECIFICATION:	DIMENSION: 240x130x380	SERIAL No.:

UNIT: cd

C (DEG) \ γ (DEG)	150	155	160	165	170	175	180	185	190	195	200	205	210	215	220
0.0	30.5	30.4	30.4	30.5	30.4	30.4	29.6	29.4	29.4	29.3	29.3	29.1	29.1	29.0	29.1
5.0	31.7	32.0	31.5	32.1	32.2	32.3	30.8	30.8	31.2	30.7	30.5	30.7	30.8	30.5	31.0
10.0	36.3	36.0	35.7	35.4	35.0	35.5	34.4	34.0	34.2	34.2	34.2	33.0	33.0	32.5	33.5
15.0	40.0	40.5	39.7	39.8	39.3	40.9	42.5	40.4	39.7	37.2	36.3	35.7	36.8	37.5	41.2
20.0	46.0	45.5	46.5	51.2	53.2	54.0	54.2	54.0	49.3	45.6	45.2	44.4	45.8	46.2	49.5
25.0	58.2	56.6	58.8	76.0	90.9	75.8	66.6	63.5	60.3	52.9	53.5	53.7	55.5	55.5	62.1
30.0	66.7	66.5	65.9	71.0	82.4	82.8	74.9	69.7	66.9	58.6	58.0	58.8	59.8	61.9	70.3
35.0	76.0	78.0	75.5	76.8	82.2	88.4	79.0	75.3	74.0	70.8	65.8	65.1	66.5	69.4	77.2
40.0	90.9	87.9	84.5	88.9	103	95.5	85.0	83.0	79.6	81.9	77.7	76.8	77.8	80.4	86.9
45.0	94.5	93.0	92.0	95.8	102	113	93.8	91.2	86.9	91.7	88.0	85.1	83.8	85.5	85.2
50.0	95.8	93.3	91.3	92.2	98.0	96.9	84.3	89.3	84.5	91.2	96.1	92.0	85.0	58.8	40.0
55.0	48.4	33.7	32.0	28.5	30.1	30.5	30.4	34.5	31.2	33.7	36.3	61.0	36.1	35.2	34.2
60.0	26.6	24.6	25.9	24.9	26.4	25.0	26.0	27.9	26.1	27.5	26.8	28.7	27.2	29.4	28.7
65.0	21.5	20.1	21.4	20.9	22.3	21.1	21.5	23.4	22.4	23.2	22.3	24.0	21.6	22.9	22.1
70.0	16.3	15.2	16.5	15.9	17.5	16.5	16.3	17.5	16.2	17.0	16.7	19.1	15.9	16.9	16.3
75.0	11.7	10.9	11.7	11.2	12.5	11.3	10.5	11.5	10.9	11.8	11.1	12.2	11.0	11.9	11.4
80.0	7.90	7.30	7.40	6.90	7.80	6.80	6.40	7.10	6.80	7.40	7.00	7.70	7.40	8.10	7.80
85.0	4.60	4.10	4.10	3.70	3.90	3.50	3.20	3.80	3.50	4.00	4.00	4.50	4.50	5.10	5.10
90.0	5.00	4.90	4.60	4.40	4.20	4.20	3.90	4.00	4.10	4.20	4.40	4.50	4.70	4.90	5.20
95.0	8.60	8.90	8.29	8.50	7.90	8.29	7.80	7.50	8.00	7.70	8.00	7.80	8.40	8.60	9.20
100.0	13.3	13.0	12.4	13.0	12.1	13.9	12.5	11.8	13.0	11.9	12.5	12.2	13.3	13.0	13.6
105.0	19.2	19.5	18.2	18.2	17.2	19.0	17.7	16.5	16.7	16.5	17.2	17.0	18.1	18.0	18.7
110.0	31.9	45.5	35.2	32.7	31.0	27.0	25.4	23.2	25.2	26.4	33.1	33.7	25.5	25.0	27.7
115.0	86.5	86.5	87.5	90.9	85.5	81.1	80.1	80.5	83.9	84.3	87.1	85.6	73.5	39.8	33.7
120.0	91.7	86.0	90.2	90.8	87.3	81.8	74.1	85.7	87.4	86.0	89.4	87.5	86.1	85.0	66.6
125.0	85.9	80.9	84.5	86.7	84.4	74.8	52.1	82.4	84.0	83.7	85.5	83.9	82.0	82.2	83.5
130.0	76.2	72.5	74.1	78.8	78.0	63.0	48.4	77.0	79.0	78.7	80.9	79.7	77.7	79.1	79.2
135.0	68.8	66.9	65.8	68.5	70.4	54.2	44.2	70.2	73.4	73.2	74.1	75.0	71.1	74.1	72.3
140.0	58.4	58.4	56.3	53.7	56.1	43.7	36.1	40.9	56.8	57.7	56.0	58.2	52.3	55.0	52.9
145.0	46.0	47.7	42.2	36.0	34.7	29.4	24.2	21.6	32.7	34.0	32.3	34.0	31.2	32.5	30.7
150.0	30.1	24.7	24.2	19.6	18.7	14.5	14.9	14.5	15.4	18.0	19.2	21.9	20.1	21.5	21.1
155.0	15.8	13.6	13.5	10.5	9.80	7.40	8.10	10.2	10.5	13.0	13.0	15.7	17.0	17.1	15.7
160.0	12.3	11.0	11.7	9.90	9.30	7.20	7.60	8.29	8.29	10.5	10.3	11.5	10.5	11.5	10.8
165.0	7.30	6.40	7.40	6.10	6.70	5.50	5.50	6.50	5.70	6.60	5.90	7.30	6.50	7.50	6.70
170.0	5.00	3.90	4.30	3.70	4.30	3.70	3.60	4.20	3.50	4.30	3.70	4.50	3.70	4.40	3.60
175.0	3.40	2.80	3.50	2.80	3.40	2.80	2.80	3.20	2.80	3.40	2.70	3.20	2.60	3.10	2.70
180.0	5.10	4.90	5.20	4.70	5.10	4.80	4.70	4.80	4.60	5.00	4.70	5.20	4.80	5.00	4.40

Test System: LSG-1800
Temperature: 25.3 DEG
Operators: G
Test Date: 10-24-2018

Test Set: 5.0deg/s C-Gamma (TYPE C)
Humidity: 65.0%
Test Distance: 10.000 m
Remarks: 48W HES

LUMINOUS DISTRIBUTION INTENSITY DATA

Report number: GO2018-262

MANUFACTURER: IDEAL LUX SRL	Address: Via Taglio Destro 32 - Mirano (VE)	
NAME: 110875 - KRONPLATZ TL1	TYPE: TABLE	WEIGHT:
SPECIFICATION:	DIMENSION: 240x130x380	SERIAL No.:

UNIT: cd

C (DEG) \ γ (DEG)	225	230	235	240	245	250	255	260	265	270	275	280	285	290	295
0.0	28.9	29.3	29.1	29.6	29.6	29.9	30.1	30.0	30.1	30.0	30.1	30.1	30.0	29.9	30.1
5.0	30.5	31.0	30.5	31.2	31.2	31.9	31.7	32.3	32.4	33.0	32.9	33.5	33.2	33.2	32.7
10.0	33.3	34.9	34.9	36.2	36.1	37.2	37.2	37.9	37.0	36.1	35.7	36.5	37.0	37.7	38.4
15.0	42.3	45.2	47.0	50.9	48.1	46.7	46.2	45.5	42.3	42.3	41.0	42.2	41.1	42.2	43.3
20.0	54.2	61.0	63.9	67.6	64.0	65.3	61.7	58.4	57.0	56.6	54.9	54.5	54.2	54.5	54.5
25.0	63.4	67.4	71.1	73.5	76.4	78.5	73.5	68.9	67.2	66.0	66.0	66.1	65.1	64.9	66.1
30.0	70.0	74.2	80.8	82.3	86.2	85.0	82.4	77.4	75.3	76.8	75.3	75.3	73.6	73.5	74.0
35.0	77.2	83.2	89.0	88.4	91.5	90.4	87.5	86.4	85.0	79.0	84.6	86.0	87.6	86.1	86.9
40.0	84.8	88.2	83.3	69.5	64.6	54.2	51.7	54.7	56.8	55.9	56.0	54.5	55.6	61.5	78.1
45.0	66.9	48.2	46.2	47.2	49.7	49.0	48.5	50.1	59.7	58.7	56.4	52.9	53.2	51.0	51.0
50.0	40.7	40.9	43.5	44.1	46.9	46.7	47.2	49.0	58.0	59.7	56.5	51.5	51.2	49.2	49.7
55.0	36.5	36.7	38.9	39.3	41.2	39.5	43.5	41.9	48.8	56.3	56.0	47.7	46.5	44.9	46.2
60.0	30.7	30.5	32.5	31.7	33.7	32.1	33.7	33.8	35.7	37.2	41.0	38.0	38.1	36.7	38.9
65.0	23.6	23.5	25.0	24.1	25.5	24.4	25.4	25.5	26.6	25.6	27.5	26.3	28.6	28.2	30.1
70.0	17.6	17.4	18.6	18.2	19.2	18.0	19.0	18.6	19.9	19.1	20.6	19.6	21.2	20.8	22.7
75.0	12.6	12.5	13.2	12.9	13.9	13.2	14.1	13.6	14.5	14.0	15.0	14.2	15.2	15.2	16.6
80.0	8.70	8.50	9.20	9.09	10.2	9.60	10.4	9.80	10.5	9.90	10.7	10.2	11.0	11.1	11.7
85.0	5.70	5.80	6.30	6.30	6.90	6.70	7.30	7.00	7.60	7.10	7.70	7.30	7.80	7.40	8.20
90.0	5.30	5.50	5.60	5.80	5.90	5.80	6.10	5.80	6.10	5.80	6.10	5.70	5.90	5.50	5.80
95.0	8.70	8.80	8.70	8.90	10.2	9.80	9.00	8.90	8.90	8.90	8.50	8.20	8.10	7.90	7.90
100.0	13.2	13.2	12.9	14.2	17.0	17.6	14.1	13.3	13.7	14.2	13.2	12.5	12.2	12.3	12.8
105.0	18.9	20.4	20.5	20.8	21.7	23.1	20.2	21.1	22.2	19.9	18.7	17.7	17.1	17.6	17.5
110.0	28.7	29.4	27.2	28.0	27.2	28.0	26.6	26.0	25.0	24.7	25.6	22.7	21.7	22.5	22.7
115.0	33.1	33.3	32.3	32.7	31.2	31.7	30.3	29.1	28.7	29.1	31.4	28.4	26.4	29.0	28.4
120.0	44.6	36.7	36.3	37.2	34.2	33.8	32.4	32.5	33.0	33.0	35.9	33.5	30.7	33.5	32.9
125.0	83.7	69.1	54.2	45.2	37.0	36.1	34.9	34.9	35.2	35.9	36.7	35.0	34.2	36.0	36.7
130.0	80.6	82.2	84.5	80.5	67.0	57.3	49.7	44.7	40.0	38.8	39.3	39.0	42.7	49.0	60.5
135.0	73.2	73.7	76.0	76.3	76.9	76.5	77.8	78.1	64.5	67.0	71.3	70.5	74.5	67.5	68.8
140.0	54.2	52.1	55.8	56.0	59.5	57.9	62.0	57.0	55.1	52.4	60.2	58.8	62.0	53.2	54.0
145.0	32.5	31.5	33.8	33.0	35.7	34.9	39.5	36.3	36.0	38.0	38.2	38.0	39.3	37.4	39.5
150.0	23.5	23.1	25.2	24.9	26.8	26.0	28.4	27.0	27.5	25.2	25.9	25.0	26.0	24.6	25.2
155.0	16.5	15.8	17.7	17.2	19.1	17.2	18.9	18.0	19.2	18.0	19.3	18.0	18.9	17.6	18.1
160.0	11.9	10.5	11.3	9.90	10.7	9.80	11.0	10.1	11.2	10.5	11.9	11.3	12.9	11.9	13.0
165.0	7.50	6.50	7.10	6.40	7.30	6.60	7.80	7.40	8.70	8.10	9.20	8.50	9.40	8.40	8.90
170.0	4.20	3.60	4.40	3.80	4.60	4.10	4.90	4.20	4.90	4.60	5.80	5.50	6.70	6.30	7.00
175.0	3.30	2.90	3.80	3.40	4.10	3.60	4.20	3.70	4.40	3.90	4.80	4.40	5.00	4.20	4.80
180.0	4.50	4.00	4.20	3.80	4.00	3.50	3.60	2.90	3.10	2.70	3.10	3.20	3.80	3.60	4.00

Test System: LSG-1800
Temperature: 25.3 DEG
Operators: G
Test Date: 10-24-2018

Test Set: 5.0deg/s C-Gamma (TYPE C)
Humidity: 65.0%
Test Distance: 10.000 m
Remarks: 48W HES

LUMINOUS DISTRIBUTION INTENSITY DATA

Report number: GO2018-262

MANUFACTURER: IDEAL LUX SRL	Address: Via Taglio Destro 32 - Mirano (VE)	
NAME: 110875 - KRONPLATZ TL1	TYPE: TABLE	WEIGHT:
SPECIFICATION:	DIMENSION: 240x130x380	SERIAL No.:

UNIT: cd

C (DEG) \ γ (DEG)	300	305	310	315	320	325	330	335	340	345	350	355
0.0	30.0	29.9	29.8	29.9	30.1	30.1	30.5	30.4	30.4	30.5	30.4	30.4
5.0	32.7	32.3	32.7	32.7	33.2	33.0	33.5	33.7	34.0	33.7	34.4	33.7
10.0	39.5	38.5	38.9	37.7	38.0	38.2	38.8	38.5	38.6	37.4	36.2	35.4
15.0	45.5	45.5	46.3	42.6	41.4	38.7	38.4	36.7	37.0	36.0	35.9	35.2
20.0	56.8	56.6	55.5	52.0	51.0	47.9	47.6	46.2	46.9	45.2	44.8	43.0
25.0	67.2	66.0	65.9	62.5	62.9	61.1	62.0	61.5	61.0	57.7	56.9	55.4
30.0	75.5	73.6	74.5	71.2	72.0	72.2	74.0	72.2	69.8	69.4	69.1	70.2
35.0	89.6	85.2	83.7	79.1	81.5	83.6	82.8	81.9	84.0	82.3	79.5	80.1
40.0	91.0	95.3	89.8	86.6	93.1	96.1	95.5	92.5	92.5	87.6	90.5	88.9
45.0	51.7	60.9	72.0	91.2	99.0	99.0	104	96.3	95.5	91.0	94.9	94.3
50.0	49.5	51.8	48.0	54.9	83.0	101	104	106	100	95.0	97.7	99.4
55.0	48.4	52.7	46.7	46.0	44.9	66.5	103	105	94.1	88.5	75.3	80.4
60.0	40.2	50.7	43.5	42.3	39.8	42.2	45.2	45.2	36.8	38.8	35.2	34.7
65.0	30.5	36.5	34.0	34.0	31.0	31.2	29.1	30.7	29.0	29.9	27.9	28.2
70.0	24.6	26.0	23.2	25.0	23.9	25.0	24.2	25.7	24.6	25.9	23.2	24.4
75.0	15.9	17.2	15.9	17.0	16.1	17.8	16.9	18.1	17.7	19.1	17.7	18.5
80.0	11.1	11.9	10.8	11.7	10.7	11.5	10.8	12.0	11.0	11.5	11.3	12.7
85.0	7.50	7.90	7.20	7.70	7.00	7.40	6.80	7.20	6.40	7.00	6.10	6.80
90.0	5.30	5.40	5.00	5.10	4.60	4.70	4.20	4.10	3.60	3.60	3.10	3.20
95.0	7.70	7.50	7.20	6.90	6.70	6.40	6.20	5.80	5.70	5.50	5.40	5.40
100.0	13.7	13.0	12.8	11.3	10.8	10.3	10.1	9.70	10.2	10.1	10.5	9.90
105.0	18.1	18.0	18.5	18.0	18.0	16.0	16.0	14.3	15.0	15.0	16.0	15.0
110.0	23.8	24.0	24.6	25.2	26.0	24.6	26.6	25.0	22.3	21.4	22.4	18.4
115.0	29.1	29.3	30.0	29.8	30.8	40.5	88.2	80.0	72.1	58.9	48.7	33.0
120.0	33.5	33.5	33.7	36.8	67.7	92.6	98.9	98.2	97.5	97.2	92.0	60.1
125.0	36.0	40.0	56.4	81.0	84.0	87.1	91.1	94.0	91.5	90.5	88.2	69.3
130.0	69.0	65.9	67.0	75.8	76.8	78.3	79.0	85.3	83.2	83.3	69.7	59.3
135.0	64.0	61.0	58.0	67.4	68.8	72.2	71.0	77.1	74.8	75.9	51.0	53.2
140.0	50.7	50.5	47.2	53.1	60.3	62.4	57.9	61.1	58.9	53.2	41.8	41.4
145.0	37.9	38.7	36.8	38.6	36.7	41.7	38.8	39.7	36.3	33.3	30.5	25.4
150.0	23.2	23.6	21.4	21.9	19.7	20.4	17.9	18.7	16.0	16.6	14.5	14.8
155.0	16.5	17.2	15.9	16.4	14.5	15.2	13.3	14.1	12.2	12.5	10.2	10.5
160.0	12.1	12.7	11.5	12.4	11.2	12.0	10.5	11.2	9.70	10.3	9.00	9.40
165.0	8.29	9.30	8.60	9.40	8.50	9.60	8.70	9.50	8.40	8.60	7.10	7.30
170.0	6.30	6.70	6.10	6.70	6.10	6.80	5.90	6.50	5.50	6.20	5.30	5.80
175.0	4.40	5.20	4.70	5.10	4.50	5.20	4.40	5.00	4.10	4.50	3.60	4.10
180.0	3.90	4.20	4.10	4.60	4.50	5.10	4.70	5.20	4.80	5.10	4.80	5.00

Test System: LSG-1800
 Temperature: 25.3 DEG
 Operators: G
 Test Date: 10-24-2018

Test Set: 5.0 deg/s C-Gamma (TYPE C)
 Humidity: 65.0%
 Test Distance: 10.000 m
 Remarks: 48W HES